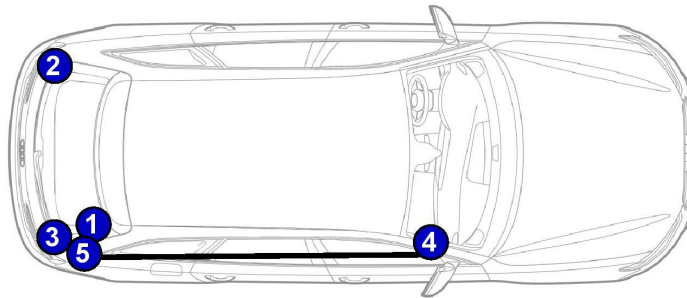


## **Assembly Instructions**

### **BMW i8 Soundbooster**

---

#### **Installation Instructions: Cable Routing**



- 1 - Control unit for engine noise (Sound ECU)
  - 2 - Speaker
  - 3 - Can Bus
  - 4 - Fuse Box
  - 5 - Ground Point
-

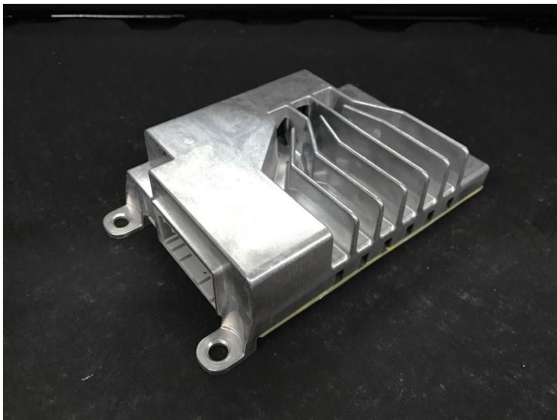
## BMW i8 Soundbooster

---

### SPEAKER CABLE AND CAN BUS FROM THE AMPLIFIER



On the BMW i8, a speaker actuator is already installed under the vehicle on the left. The connection for this needs not be re-created. The signal can be picked up directly at the BMW amplifier.



You will find the BMW amplifier in the trunk behind the right side panel. The amplifier is fixed with 3 screws

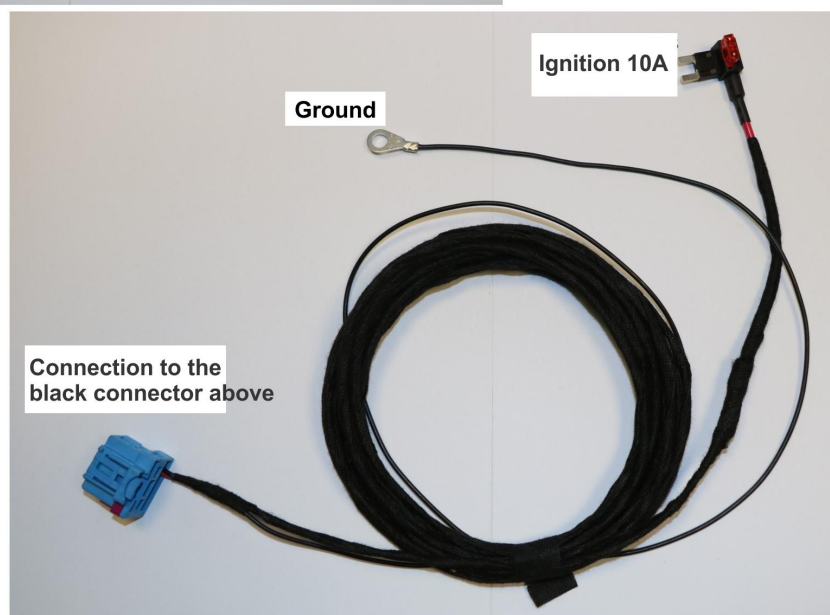
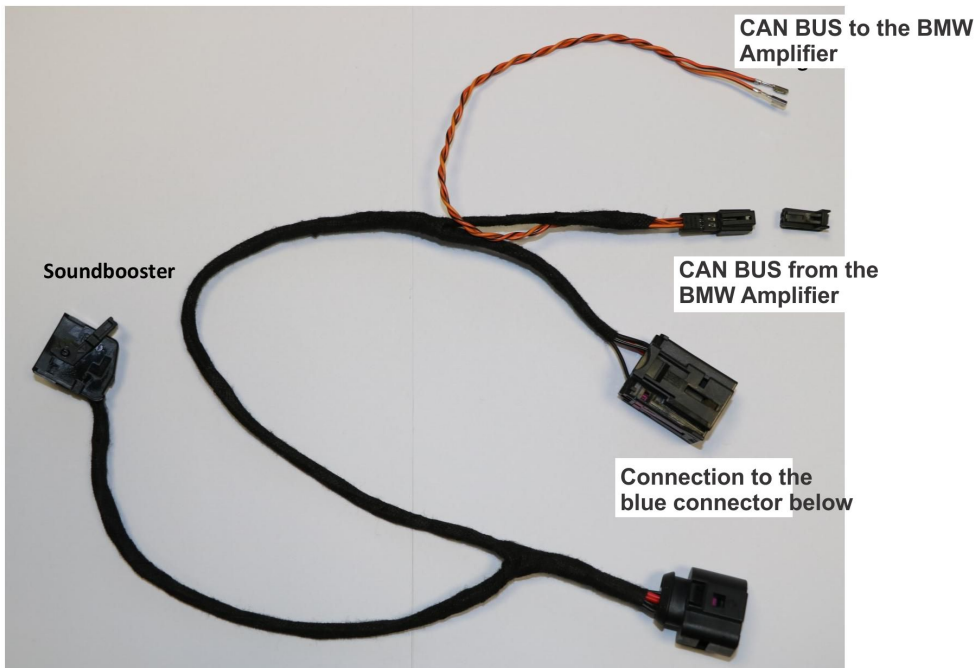


Disconnect the plug from the amplifier

## BMW i8 Soundbooster

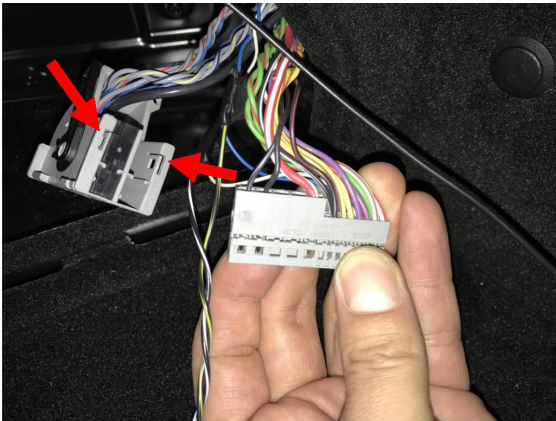
---

### CAN BUS

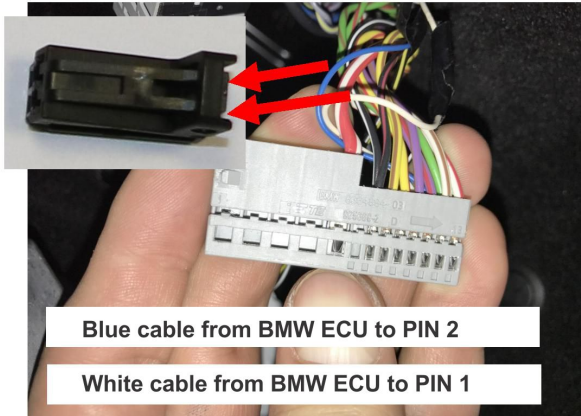


## BMW i8 Soundbooster

### CAN BUS



Slide the inlay out of the plug.  
To do this, press the latch (red arrow)  
outwards and pull out the inlay.



Blue cable from BMW ECU to PIN 2

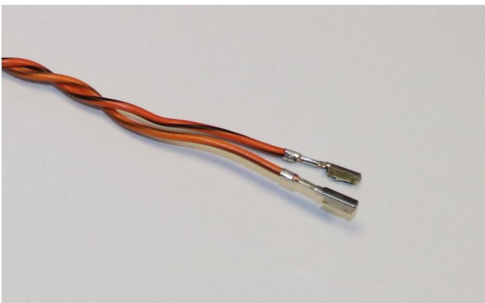
White cable from BMW ECU to PIN 1

Disconnect the Blue cable (Can Low) from pin 19 and  
pin it on the supplied black plug on pin 2.

Pin out the White cable (Can High) from pin 18 and  
pin it on the supplied black plug on pin 1.

*note: we have found on some i8s that the can-bus pin order  
is reversed. So if the above setup does not work please  
change the order:*

*Blue cable to pin 1 and White cable to pin 2*

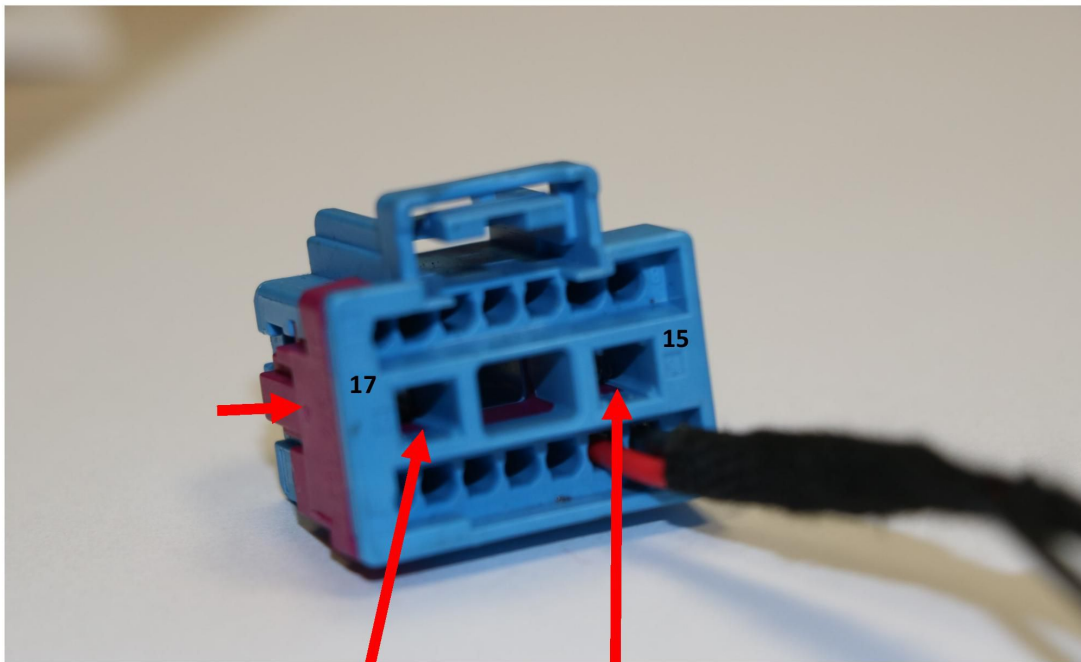


Connect the orange / black cable to the free space (Pin 18)  
where the white cable was plugged into the BMW control unit

Orange / brown cable on the vacated place (Pin 19)  
where the blue cable was plugged into the BMW control unit

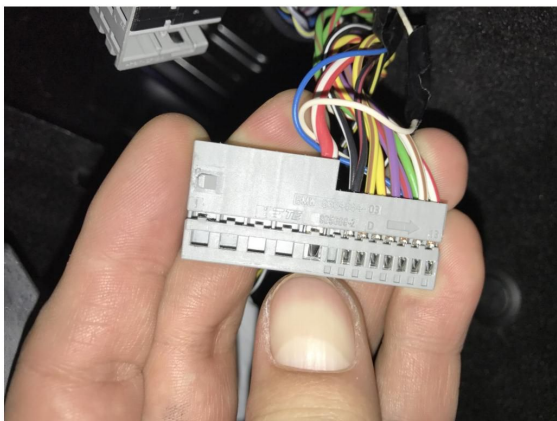
## BMW i8 Soundbooster

### CONNECT LOUDSPEAKERS



Black cable from the  
BMW control unit Pin 2 to pin 17 (+)

Black / gray cable from  
BMW control unit Pin 1 to pin 15 (-)



Take out the Black cable from the BMW connector  
(pin 2 (+)) and connect it to the blue plug on pin 17.

Take out the Black / Gray cable from the BMW connector  
(pin 1 (-)) and connect it to the blue plug on pin 15.

Then press the violette lock of the blue plug.



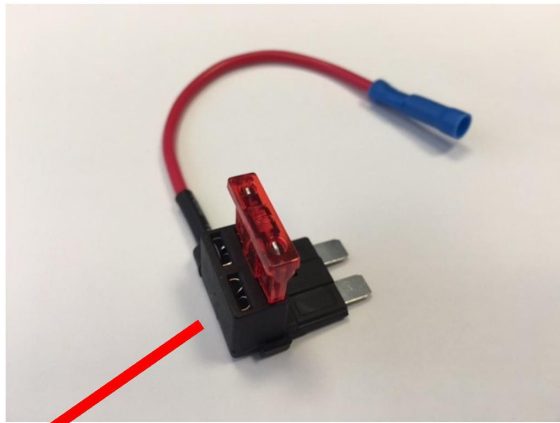


## BMW i8 Soundbooster

### POWER SUPPLY / GROUND



Attach the ground wire to a body screw in the trunk. Install the long cable with the blue plug from the trunk to the front passenger side behind the glove compartment and into the fuse box.



Remove the fuse 55 (5A) and insert it into the blank space in the fuse adapter. Then insert the fuse adapter into slot 55. Both fuses must be plugged into the power outlet, it needs 10A to power up (5A+5A).



MEDIA	50, 51, 52, 61, 68, 76, 115, 126, 127, 129		63, 84, 112, 116
	50, 55, 56, 57, 60		78, 81
	72, 77, 121, 123, 124		41, 71
		A/C	34, 53, 75, 130
			30, 40, 41